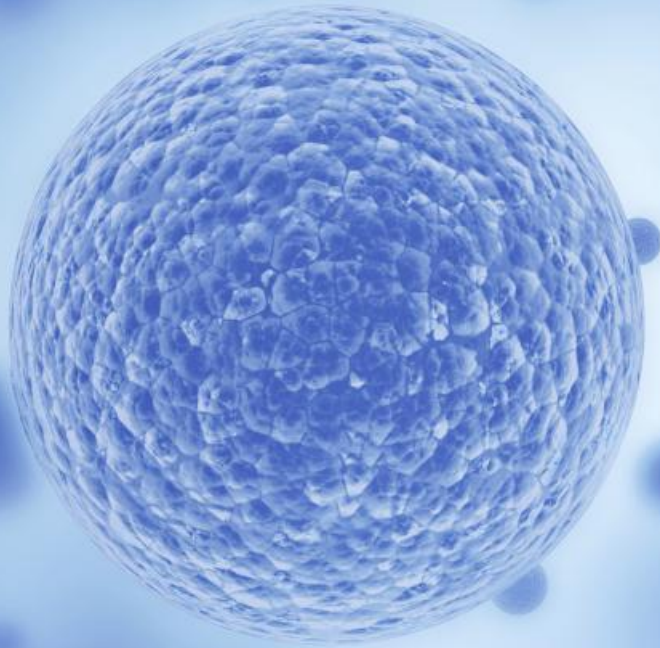


CELL



Each BODY functions in an external
ENVIRONMENT.

Each BODY has internal COMPONENTS
which enable it to thrive in its external
ENVIRONMENT.

Our physical environment = earth

Our mental/spiritual environment = “the world” (*John 16:33, 17:14*)

* Satan’s domain, the “world” is hostile to the message and power of Christ, therefore hostile to the Christian.

* We must function in the world while being part of Christ.

Our physical body provides great analogies for successfully giving life to Christ's body in the environment of "the world".

Tiny CELLS within our physical body give us many clues for spiritual survival and success.

Because we belong to Christ, we belong to one another.

* We have different characteristics but we share IDENTITY.

* We have different functions but we share PURPOSE.

The body is a UNIT, though it is made up of many parts ... it is ONE BODY. So it is with Christ ... Jew, Greek, slave, free ... ONE body ... ONE spirit. (*1 Corinthians 12:12-13*)

COOPERATION!

Cells do not argue about their function because they each carry a sense of **belonging**.

Cells will not cooperate with a **foreign** cell (one from outside that body).

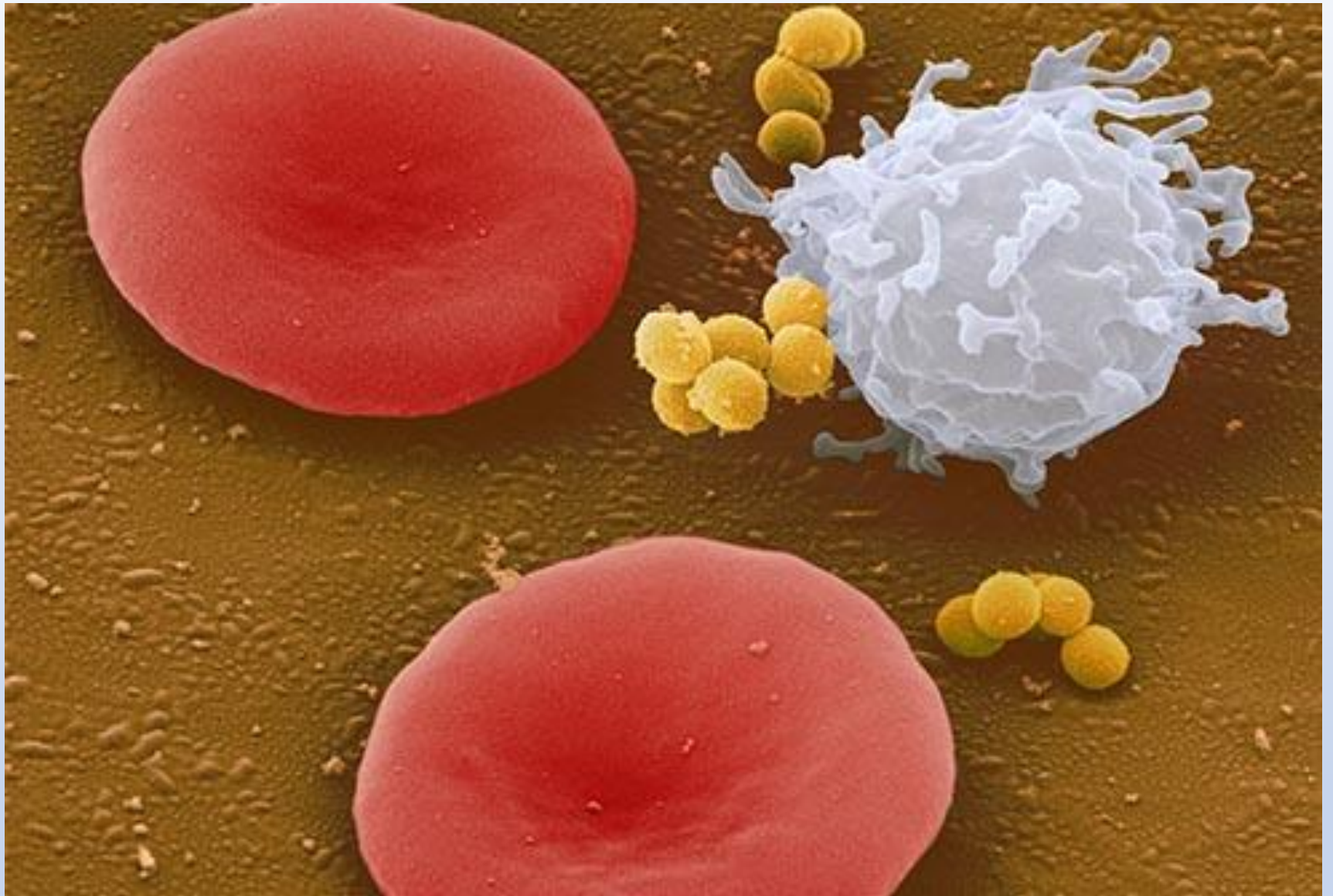
Cells keep in **communication**
with conditions throughout their
entire body.

No one cell or type of cell produces our sensation of “pleasure” or “joy”. This “feeling” comes to us as a **byproduct** of the **cooperation** of **many** individual cells.

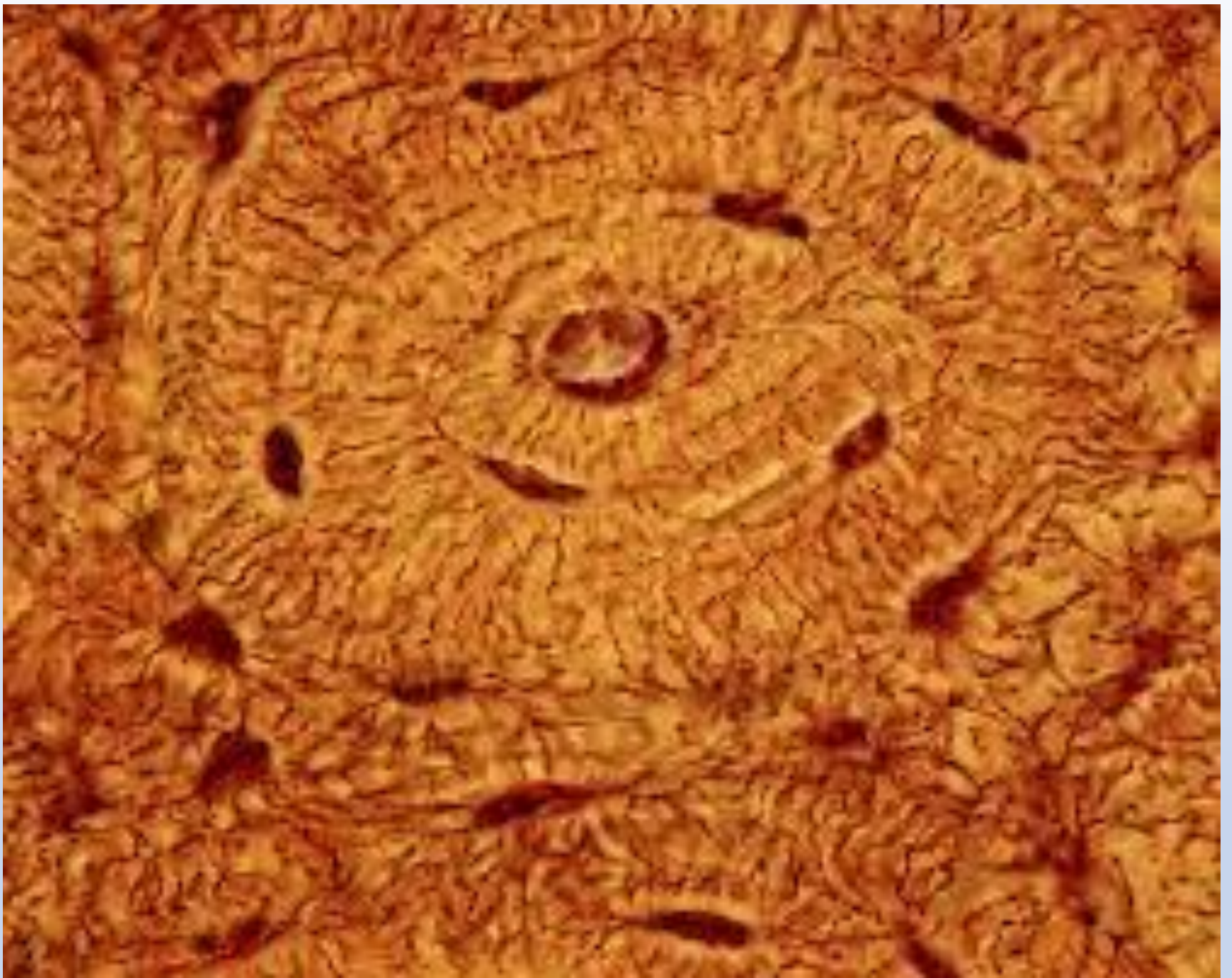
Now the body is not made up of one part but many ... God has arranged the parts of the body, every one of them, just as he wanted them to be ... many parts but one body. (*1 Corinthians 12:14-20*)

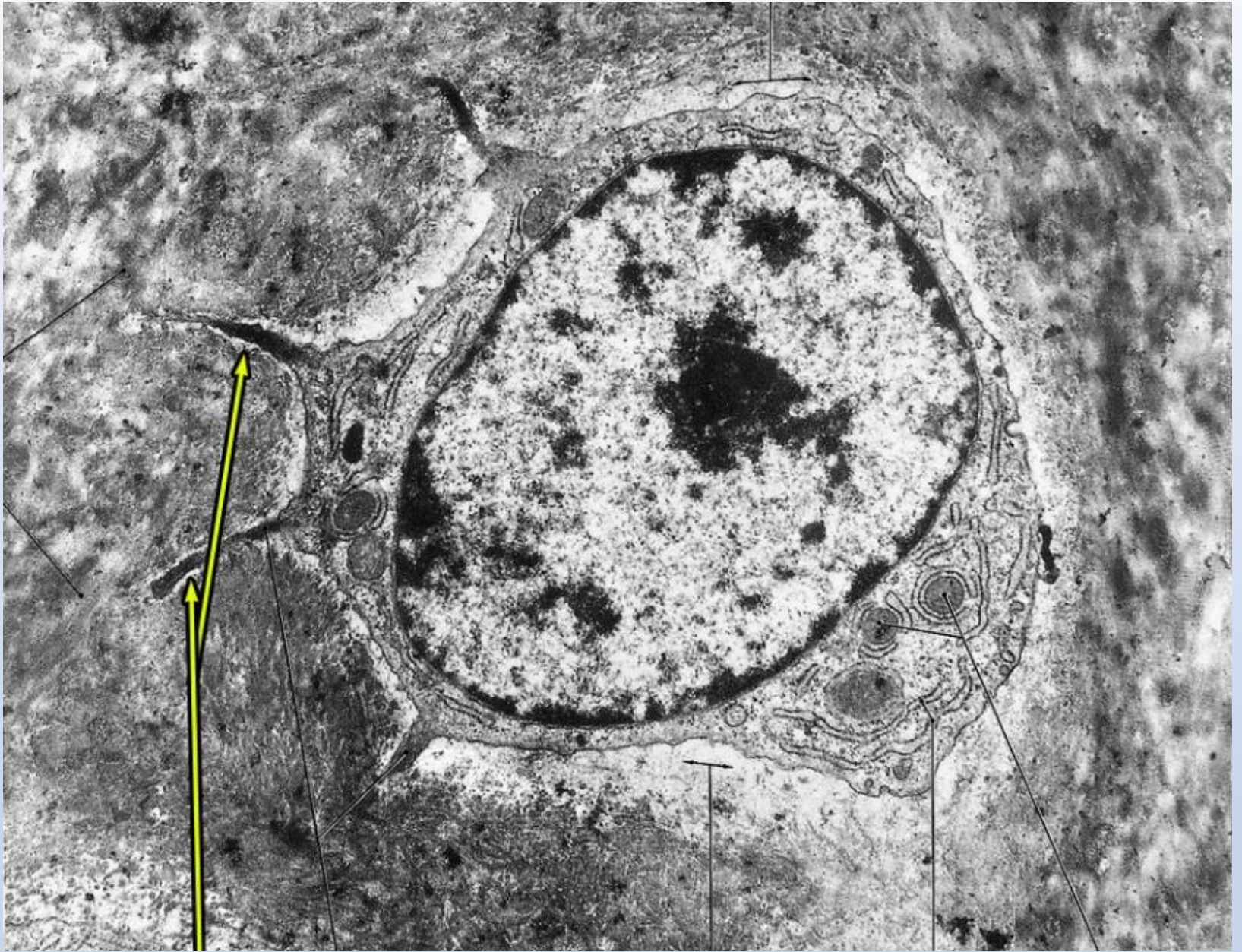
SPECIALIZATION!

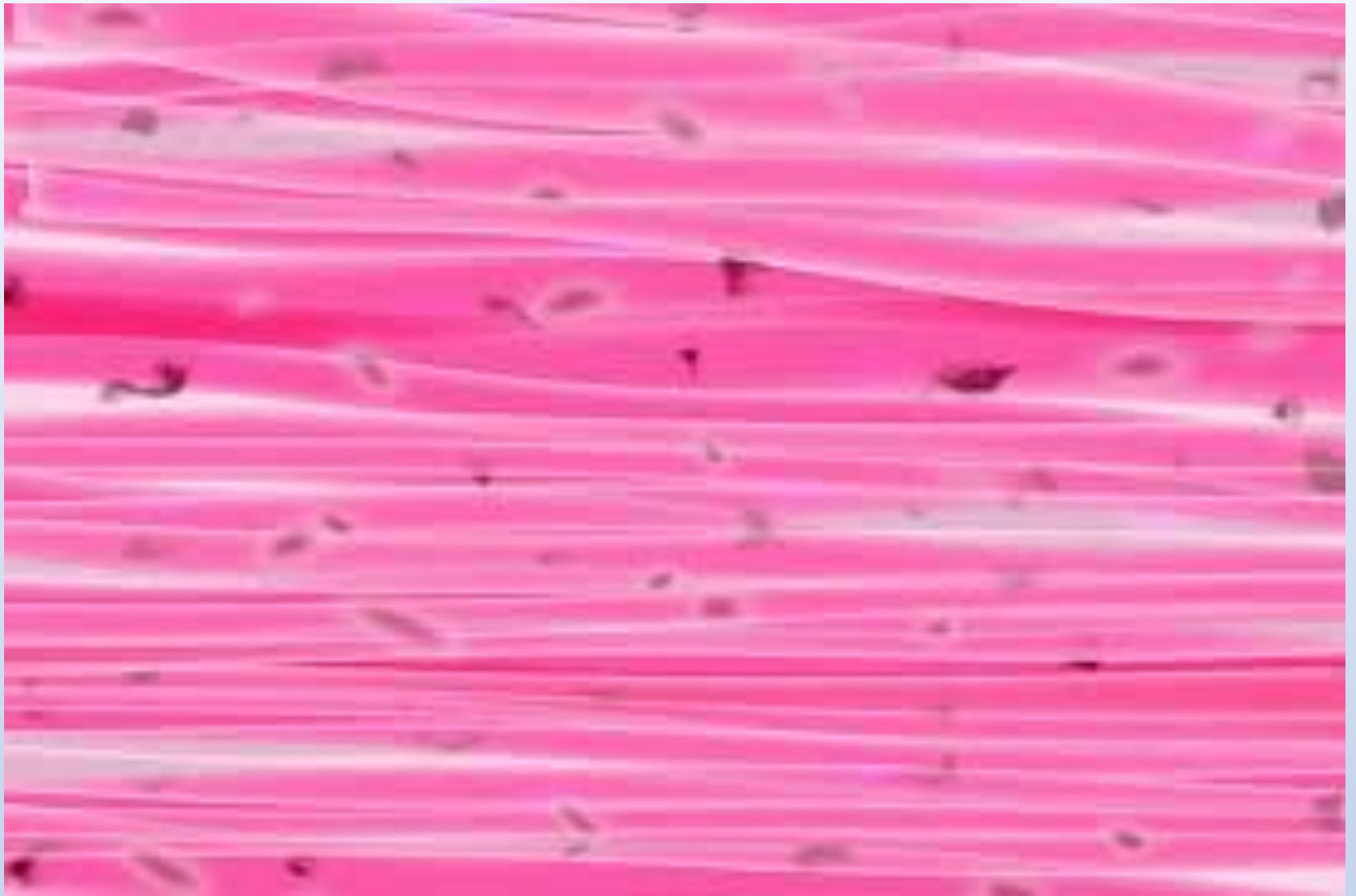
- Shape and chemistry determine **function**.
- Simple functions, when added to the contributions of other cell functions, create a **cumulative** effect which enables **complex** and **useful** results.





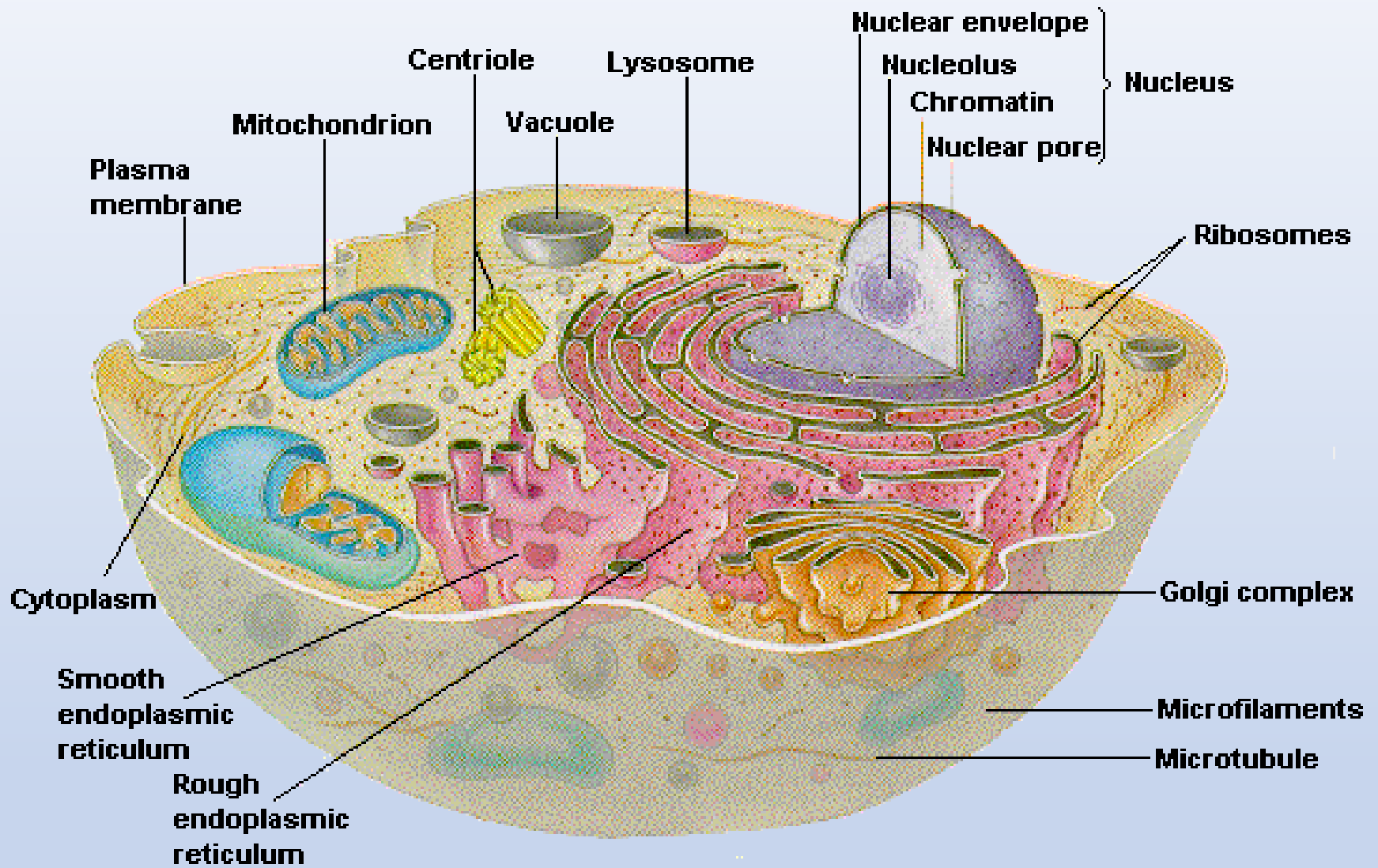


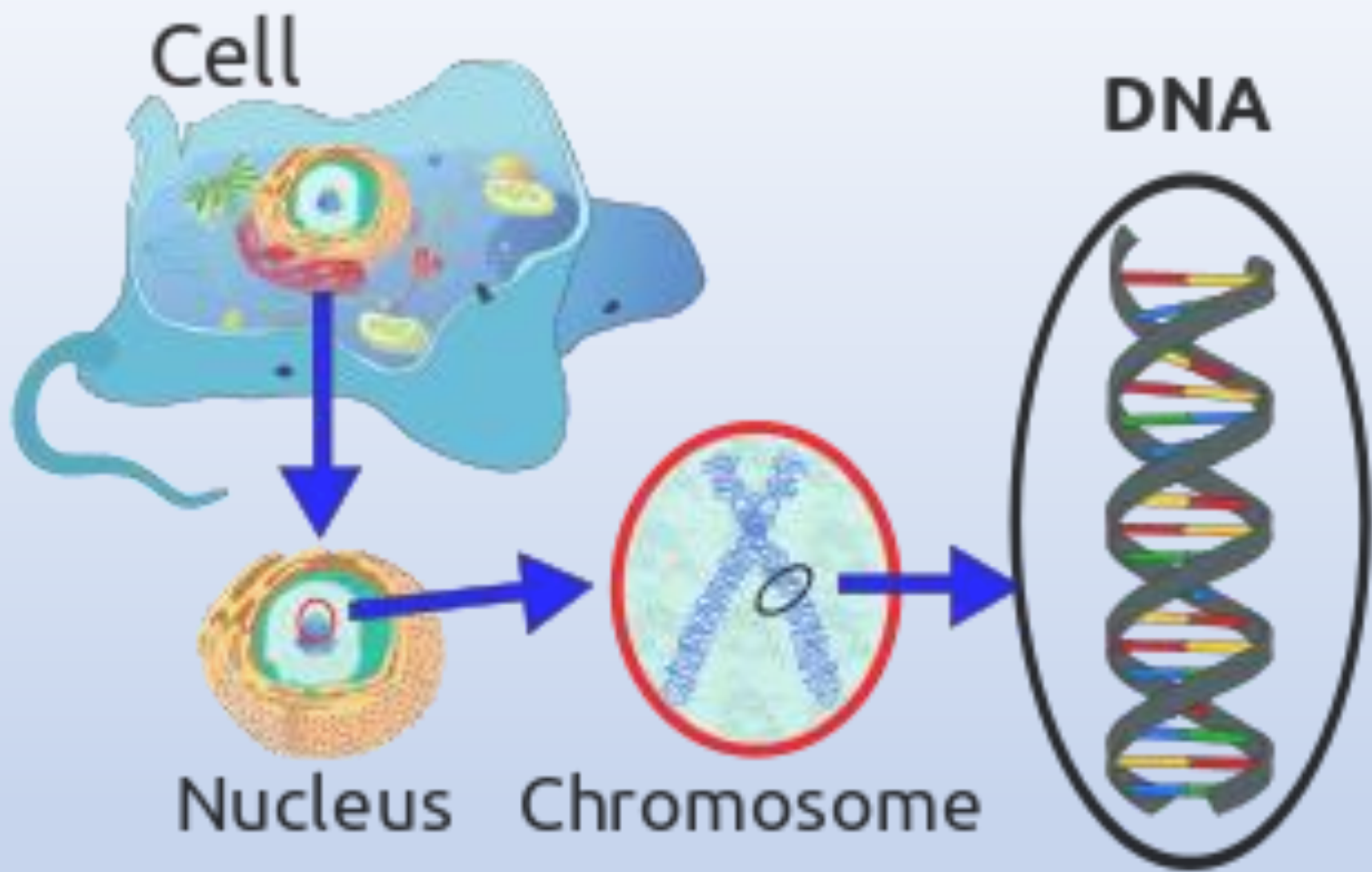












God has COMBINED the parts of the body so that there should be no division in the body, but that its parts should have equal concern for each other. If one part suffers, every part suffers with it. If one part is honored, every part rejoices with it. *(1 Corinthians 12:21-28)*

VALUE!

The body has no ranking system which values one cell as **more important** than another. The worth and need of each is **equal**. All are **valued** and **essential**.

Now YOU ARE the body of Christ,
and each one of you is a part of it.
(1 Corinthians 12:27)

IDENTITY!

Your body's DNA code is exactly the same in every cell of **every type** within your body.

Each cell has its unique structure and instruction (function) but **shares** the **entire** genetic package common to all.

As Christians, we share not simply image or faith but the very identity of Christ.

The eye cannot say to the hand, “I don’t need you!” (*1 Corinthians 12:21*)

HARMONY!

All cells are periodically **replaced** by new ones. Like a fountain, the body **maintains** its shape yet is constantly being **renewed**. Somehow the older cells know that the new cells belong, and they are **welcomed**. Old cells **function** harmoniously **alongside** new ones.

Each cell is loyal to the DNA, and through the DNA, to each other.

CELL

